

# SMA, SMB, MCX Series – Miniature



## SMA Features

- 18 GHz MIL-C-39012 SMA specifications
- High quality finish and optimum electrical properties
- Special version offers housing elements made of copper beryllium or stainless steel for higher mechanical strength
- Copper beryllium of the special version is gold plated, while stainless steel connectors are passivated
- SSMA also available.

## SMB Features

- DC to 4GHz MIL-C-39012 SMB specifications
- Snap-on for rapid connection and disconnection

## MCX Features

- Up to 2GHz MIL-C-39012 MCX specifications
- 30% less space than SMB
- Offers equal contact reliability as SMB

## Major Performance

<b>SMA</b>	Impedance	50Ω		Contact resistance	Center Contacts	3.0mΩ
	Frequency range	Semi-rigid	DC 18GHz		Outer Contacts	2.5mΩ
		Flexible	DC 12.4GHz	Insulation resistance		
	Contact current	DC 2.0A max		Insertion loss		0.05 f(GHz)db
	Working voltage	Semi-rigid	1000V	V.S.W.R		<1.15+0.02f(GHz)
Flexible		750V	RF leakage		-60dB min@2~3GHz	

<b>SMB</b>	Impedance	50Ω		Insulation resistance	1000MΩ min	
	Frequency range	DC to 4GHz		Insertion loss		0.6dB max
	Contact current	DC 1.5A max		V.S.W.R	Straight	1.3+0.04f
	Voltage rating	250V R.M.S			Right-angle	1.4+0.06f
	Contact resistance	Center Contacts	0.3mΩ	RF leakage	-55dBm min. between 2 to 3 GHz	
Outer Contacts		0.5mΩ				

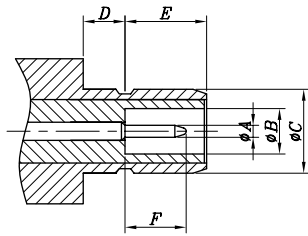
<b>MCX</b>	Impedance	50Ω		Contact resistance	Center Contacts	5.0mΩ	
	Frequency range	up to 2 GHz			Outer Contacts	1.0mΩ	
	Contact current	DC 1.5A		Insulation resistance		1000MΩ min	
	Voltage rating	250V R.M.S		V.S.W.R		Straight	1.3 max
						Right-angle	1.35 max

## Material Used / Finishing Material

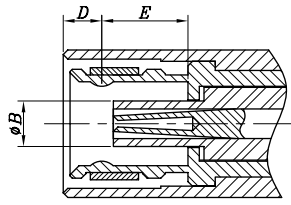
General		Material	Finish
Body		Brass	Gold
Insulator		Ptfe	Natural(White)
Contacts	Pin	Brass	Brass
	Socket	Brass	Brass

Specifications subject to change without notice. Consult Sam Woo Electronics for the latest specifications.

## SMB Interface Dimensions



Plug



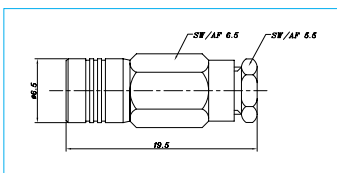
Jack

### Interface Dimension

SMB	Plug mm		Jack mm	
	min.	max.	min.	max.
A	0.48	0.53		
B	2.08			2.06
C	3.66	3.71		
D	1.65			1.63
E	3.33	3.58	3.58	
F		2.97	2.97	

## SMB Plugs

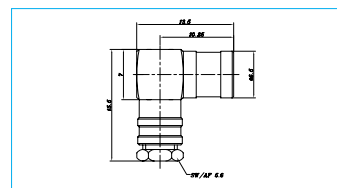
### Flexible Cable - Clamp



#### Part Number

SMB-P-58/u  
SMB-P-178/u  
SMB-P-316/u

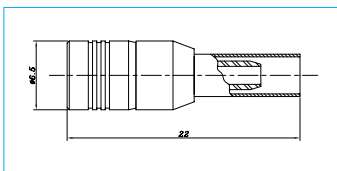
### Right-angle - Flexible - Clamp



#### Part Number

SMB-LP-58/u  
SMB-LP-178/u  
SMB-LP-316/u

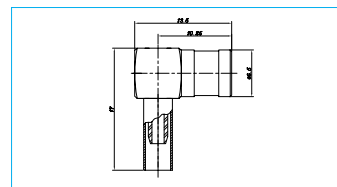
### Flexible Cable - Crimp



#### Part Number

SMB-PC-58/u  
SMB-PC-178/u  
SMB-PC-316/u

### Right-angle - Flexible Cable - Crimp

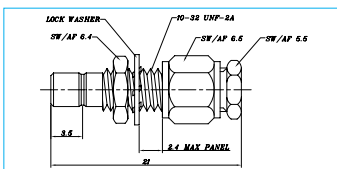


#### Part Number

SMB-LPC-58/u  
SMB-LPC-178/u  
SMB-LPC-316/u

## SMB Jacks

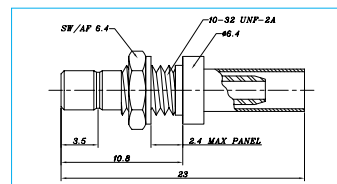
### Bulkhead - Flexible - Clamp



#### Part Number

SMB-BJ-58/u  
SMB-BJ-178/u  
SMB-BJ-316/u

### Bulkhead - Flexible Cable - Crimp

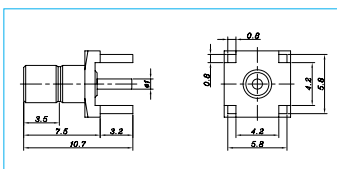


#### Part Number

SMB-BJC-58/u  
SMB-BJC-178/u  
SMB-BJC-316/u

## SMB Receptacles

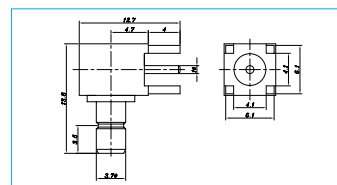
### PCB Receptacle - 4 leg - Stub Terminated



#### Part Number

SMB-J4R-PCB

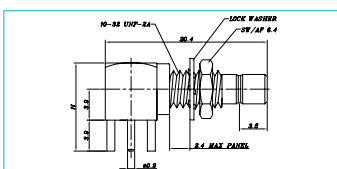
### Right-angle - PCB Receptacle - 4 leg - Stub Terminated



#### Part Number

SMB-LJ4R-PCB

### Right-angle - Bulkhead - PCB Receptacle - 4 leg - Stub



#### Part Number

SMB-LB4R-PCB

Specifications subject to change without notice. Consult Sam Woo Electronics for the latest specifications.