

SW Series Part Numbering



Features

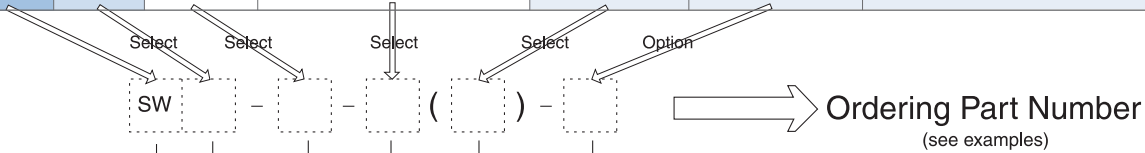
- Excellent performance at low cost
- Screw mounting assures solid connection
- Manufactured with precision

Applications

- Professional audio and video
- CCTV system
- Vision related testing equipment
- Portable wireless radio
- Measuring equipment
- Computers and peripherals
- Medical, and much more.

Part Numbering

Product Number		Size	Number of Contacts	Suffix	Optional Suffix	Notes	
Series	Prefix				S		
SW	H	8 or 10	8 size : 4,5,6 10 size : 2,3,4,9,10,12	P	•	Main SW Series	
				R / RPCB	•		
				A	P	•	SWH Series (SW with reverse contacts)
					R / RPCB	•	
	HA			blank	•	SWA Series (Adapter for SW series)	
				blank	•	SWHA Series (Adapter for SWH series)	



Examples

- SW - 8 - 4 (P)
SW series - Size 8 Plug - 4 Male Contact (Plug shell)
- SW - 10 - 12 (R) - S
SW series - Size 10 Receptacle - 12 Female Contact - Silver Plating Contact
- SWA - 10 - 2
SW series - Size 10 Adapter - 2 Female Contact
- SWHA - 8 - 6 - S
SWH series - Size 8 Adapter - 6 Male Contacts - Silver Plating Contact

Connector Series

- SW
- SWH - reverse contact
- SWA - adapter for SN series
- SWHA - adapter for SNH series

Size

8,10

No. of Contacts

8 Size : 4,5,6
10 Size : 2,3,4,9,10,12

Body Type

- P : Plug
- R : Receptacle (solder termination)
- RPCB : Receptacle (PCB termination)
- blank : Adapter

Optional

- S : Silver Plating Contact

Specifications subject to change without notice. Consult Sam Woo Electronics for the latest specifications.

Major Performances / Contact Arrangements

Performance	Size / No. of Contacts		Size 8			
	4	5	5	5	6	6
Withstanding Voltage (per min) ¹	AC 300V	AC 300V	AC 300V	AC 300V	AC 300V	AC 300V
Current	2A	2A	2A	2A	2A	2A
Insulation Resistance (Minimum) ²	1,000M Ω	1,000M Ω	1,000M Ω	1,000M Ω	1,000M Ω	1,000M Ω
Contact Resistance (Maximum) ³	10m Ω	10m Ω	10m Ω	10m Ω	10m Ω	10m Ω
Solder Pot Inside Diameter	∅ 0,7	∅ 0,7	∅ 0,7	∅ 0,7	∅ 0,7	∅ 0,7
Wire Gauge(Maximum)	AWG24	AWG24	AWG24	AWG24	AWG24	AWG24
Contact Arrangement						

Performance	Size / No. of Contacts		Size 10			
	2	3	4	9	10	12
Withstanding Voltage (per min) ¹	AC 500V	AC 500V	AC 500V	AC 300V	AC 300V	AC 300V
Current	3A	3A	3A	2A	2A	2A
Insulation Resistance (Minimum) ²	1,000M Ω	1,000M Ω	1,000M Ω	1,000M Ω	1,000M Ω	1,000M Ω
Contact Resistance (Maximum) ³	10m Ω	10m Ω	10m Ω	10m Ω	10m Ω	10m Ω
Solder Pot Inside Diameter	∅ 1,0	∅ 1,0	∅ 1,0	∅ 0,7	∅ 0,7	∅ 0,7
Wire Gauge(Maximum)	AWG20	AWG20	AWG20	AWG24	AWG24	AWG24
Contact Arrangement						

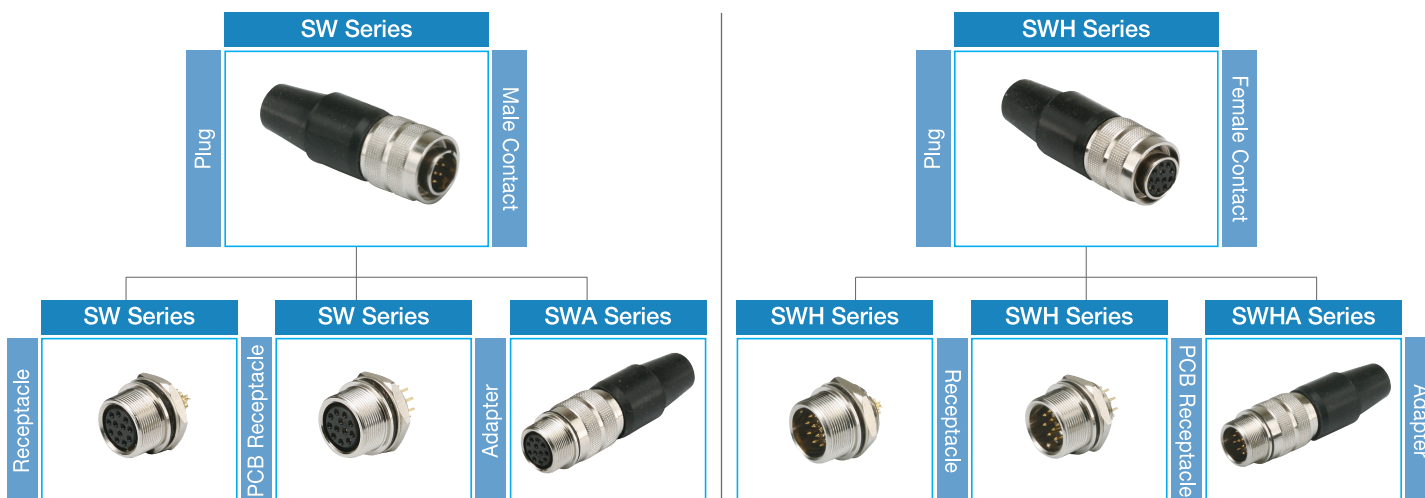
Contact Diameter
∅ 0,55mm ∅ 1,0mm

¹ Withstanding voltage is the tested voltage value in this table.
² Insulation resistance is measured at DC 100V.
³ Contact resistance is measured at DC 1A.
 • Values are from tested items and may not apply to all connectors.
 • Specifications subject to change without notice.
 • Consult Sam Woo Electronics for the latest specifications.
⁴ Connector contact arrangement is from mating surface.

Material Used / Finish

	Material	Finish
Body	Brass	Ni Plating
Insulator	PA	Black
Contacts	Male	Brass
	Female	Phosphor bronze

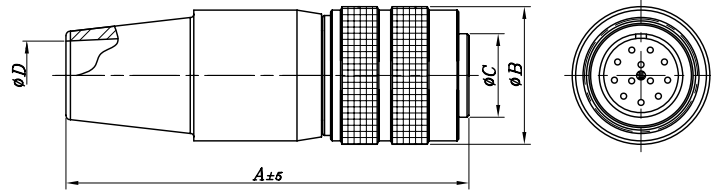
SW Series Mini-map



SW Series SW Male Plug, Female Receptacle / Adapter



SW Plug



Product Number	A	Ø B	Ø C	Ø D
SW-8-4 (P)	35	11	6,7	5,1
SW-8-5 (P)				
SW-8-6 (P)				

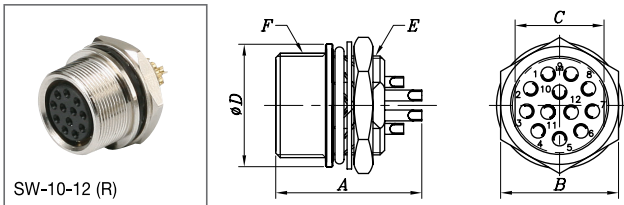
Product Number	A	Ø B	Ø C	Ø D
SW-10- 2 (P)	42	14	8,5	7
SW-10- 3 (P)				
SW-10- 4 (P)				
SW-10- 9 (P)				
SW-10-10 (P)				
SW-10-12 (P)				

→ SW Series
→ Size
→ No. of Contacts

Silver contact

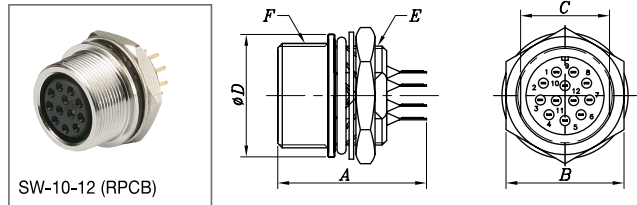
Include '-S' at end of Product Number.
EX) SW-8-4 (P)-S
SW-10-12 (P)-S

SW Solder Type Receptacle



Product Number	A	B	C	Ø D	E	F
SW- 8- 4 (R)	14,5	10	7,5	10	M8×0,5P	M9×0,5P
SW- 8- 5 (R)						
SW- 8- 6 (R)						
SW-10- 2 (R)	15	13	9,8	13,5	M11×0,75P	M11,5×0,5P
SW-10- 3 (R)						
SW-10- 4 (R)						
SW-10- 9 (R)						
SW-10-10 (R)						
SW-10-12 (R)						

SW PCB Type Receptacle

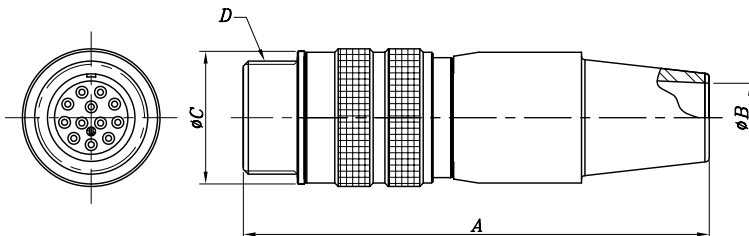


Product Number	A	B	C	Ø D	E	F
SW- 8- 4 (RPCB)	15,7	10	7,5	10	M8×0,5P	M9×0,5P
SW- 8- 5 (RPCB)						
SW- 8- 6 (RPCB)						
SW-10- 9 (RPCB)	15,7	13	9,8	13,5	M11×0,75P	M11,5×0,5P
SW-10-10(RPCB)						
SW-10-12(RPCB)						

Silver contact

Include '-S' at end of Product Number.
EX) SW-8-4 (RPCB)-S
SW-10-12 (R)-S

SW Adapter



Product Number	A	Ø B	Ø C	D	Product Number	A	Ø B	Ø C	D
SWA-8-4	39,3	5,1	10	M9×0,5P	SWA-10- 2	47	7	13,5	M11,5×0,5P
SWA-8-5					SWA-10- 3				
SWA-8-6					SWA-10- 4				
	SWA-10- 9								
	SWA-10-10								
	SWA-10-12								

→ SWA Series
→ Size
→ No. of Contacts

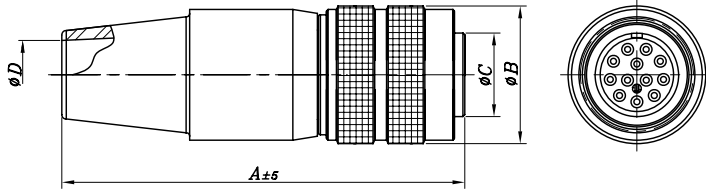


Silver contact

Include '-S' at end of Product Number.
EX) SWA-8-4-S
SWA-10-12-S

Specifications subject to change without notice. Consult Sam Woo Electronics for the latest specifications.

■ SWH Plug



SWH-10-12(P)

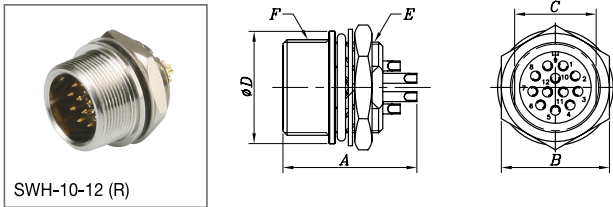
Silver Plating Contact
 Include '-S' at end of Product Number,
 EX) SWH-8-4 (P)-S
 SWH-10-12 (P)-S

Product Number	A	ø B	ø C	ø D
SWH-8-4 (P)	35	11	6,7	5,1
SWH-8-5 (P)				
SWH-8-6 (P)				

→ SWH Series
 → Size
 → No. of Contacts

Product Number	A	ø B	ø C	ø D
SWH-10- 2 (P)	42	14	8,5	7
SWH-10- 3 (P)				
SWH-10- 4 (P)				
SWH-10- 9 (P)				
SWH-10-10 (P)				
SWH-10-12 (P)				

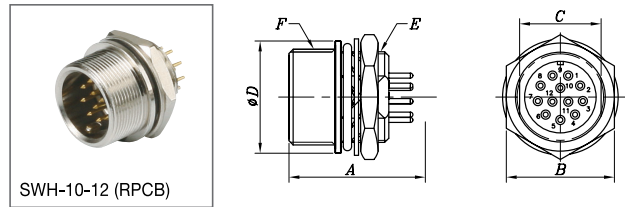
■ SWH Solder Type Receptacle



SWH-10-12 (R)

Product Number	A	B	C	ø D	E	F
SWH- 8- 4 (R)	14,2	10	7,5	10	M8×0,5P	M9×0,5P
SWH- 8- 5 (R)						
SWH- 8- 6 (R)						
SWH-10- 2 (R)	16,2	13	9,8	13,5	M11×0,75P	M11,5×0,5P
SWH-10- 3 (R)						
SWH-10- 4 (R)						
SWH-10- 9 (R)						
SWH-10-10 (R)						
SWH-10-12 (R)						

■ SWH PCB Type Receptacle



SWH-10-12 (RPCB)

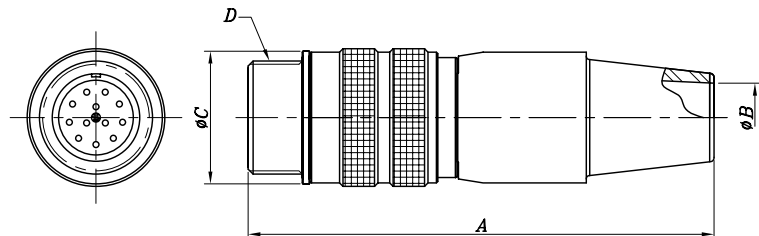
Product Number	A	B	C	ø D	E	F
SWH- 8- 4 (RPCB)	15	10	7,5	10	M8×0,5P	M9×0,5P
SWH- 8- 5 (RPCB)						
SWH- 8- 6 (RPCB)						
SWH-10- 9(RPCB)	15	13	9,8	13,5	M11×0,75P	M11,5×0,5P
SWH-10-10(RPCB)						
SWH-10-12(RPCB)						

Silver Plating Contact
 Include '-S' at end of Product Number,
 EX) SWH-8-4 (RPCB)-S
 SWH-10-12 (R)-S



SWHA-10-12

■ SWHA Adapter



Product Number	A	ø B	ø C	D
SWHA-8-4	39,3	5,1	10	M9×0,5P
SWHA-8-5				
SWHA-8-6				

→ SWHA Series
 → Size
 → No. of Contacts

Product Number	A	ø B	ø C	D
SWHA-10- 2	47	7	13,5	M11,5×0,5P
SWHA-10- 3				
SWHA-10- 4				
SWHA-10- 9				
SWHA-10-10				
SWHA-10-12				

Specifications subject to change without notice. Consult Sam Woo Electronics for the latest specifications.

General Instruction / Information

- Diagram 1 shows a sample wiring for SW series.
- Soldering must be done quickly and carefully to prevent damage to insulator.
- Receptacles do not require additional instructions.

Wiring Sequence

- ① Select cable according to outer diameter and cross section, lower than $0,129\text{mm}^2$ (AWG#26).
- ② Insert RUBBER BUSHING to cable.
- ③ Insert PLUG HOUSING to cable.
- ④ Strip cable per dimension given and loosen braid.
- ⑤ Secure PLUG BODY to jig for soldering.
- ⑥ Solder stripped cable to pin.
- ⑦ Fasten CRIMP using hand crimp tool (SA-HCT^①)
- ⑧ Lock PLUG HOUSING and PLUG BODY using tightening force displayed on Table 1.
- ⑨ Tighten WRENCH BOLT using 0,3N force onto one of two embossed parts of crimp.
- ⑩ Cover RUBBER BUSHING onto PLUG HOUSING.

^① See below for information on SA-HCT.

Diagram 1

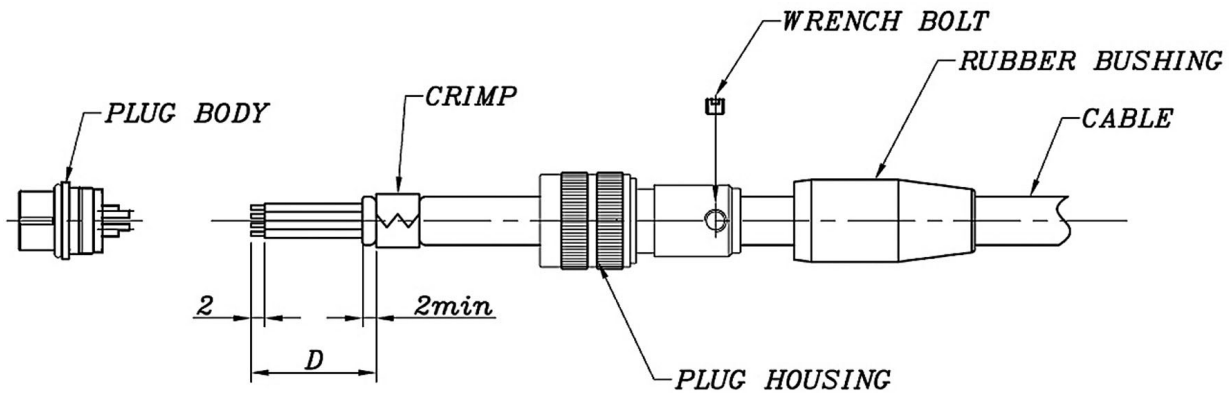


Table 1

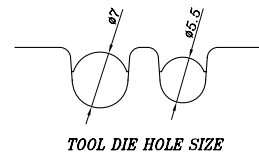
unit : mm

Size	Spanner Jaw	D (Dimension)	Tightening Force	Notes
SW - 8	8	10	1,5N · m (15kgf · cm)	SA-HCT size ϕ 5,5
SW - 10	10	16	2,0N · m (20kgf · cm)	SA-HCT size ϕ 7,0

SA-HCT (Hand Crimp Tool)



Specially designed for Sam Woo's connector, the low-cost and efficient SA-HCT provides the best crimping results.





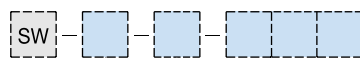
Features

- Excellent performance at low cost
- Screw mounting assures solid connection
- Manufactured with precision
- Standard and Custom Design

Applications

- Professional audio and video
- CCTV system
- Vision related testing equipment
- Portable wireless radio
- Measuring equipment
- Computers and peripherals
- Medical, and much more.

■ Part Numbering



Drawing Number
Optional Suffix (Omissible)
 1,2,3
 To indicate modification of original

Cable Length : 3 Digits
 Unit Plug : m
 Recept : cm
 Ex) Using 3m Cable for Plug : 003
 Using 30cm Cable for Recept : 030

■ Plug Cable Assembly



Type	Construction
A	SW Connector + Cable + Housing
B	SW Connector + Cable + SW Connector

※ Design and Customization Service Available

■ Receptacle Cable Assembly



Type	Construction
A	SW Connector + wire + open end
B	SW Connector + wire + Housing
C	SW Connector + wire + Housing with core

※ Design and Customization Service Available