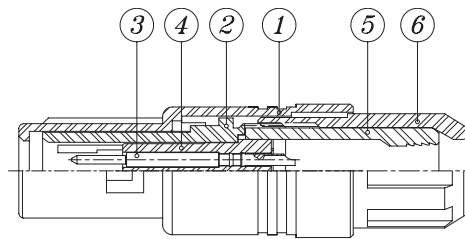
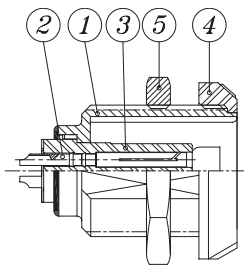


■ Performance

Characteristics	Value	Standards
Average retention force when pulling on the cable 1N=0,102kg	90N	IEC 60512-8 test 15f
Cable retention force (depends on cable construction) 1N=0,102kg	50 - 150N	IEC 60512-9 test 17c
Endurance (Shell)	> 1000 cycles	IEC 60512-5 test 9a
Working temperature range (PSU shell, Color : Black, Grey)	-50 / + 150℃	-
Working temperature range (PEI shell, Color : Black, Grey)	-50 / + 170℃	-
Working temperature range (PC shell, Color : Black, Grey)	-25 / + 85℃	-

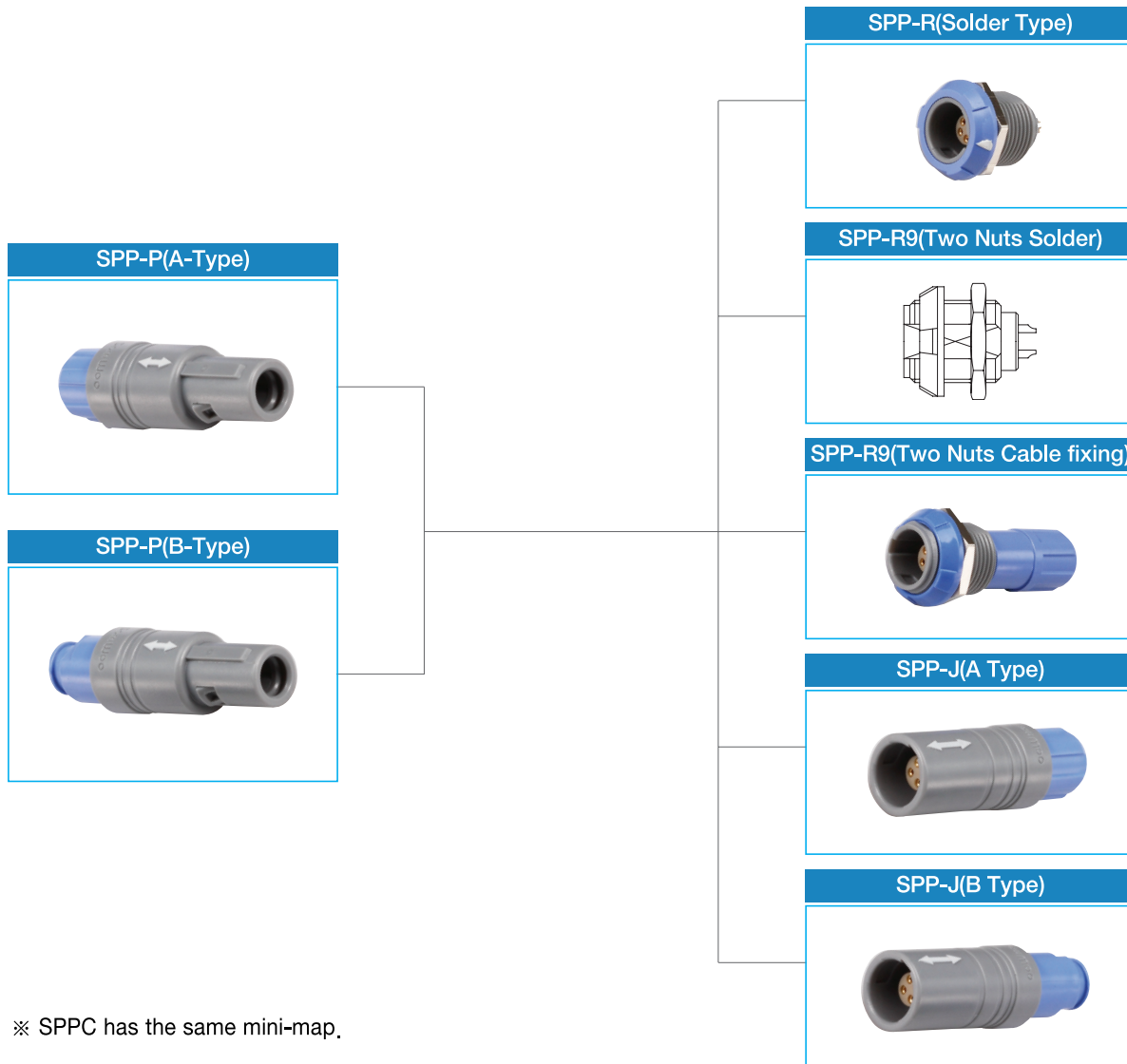
■ Standard Model

- Fixed Receptacle
- ① Body
 - ② Female contact
 - ③ Insulator
 - ④ Front nut
 - ⑤ Nut



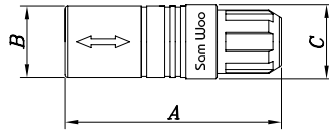
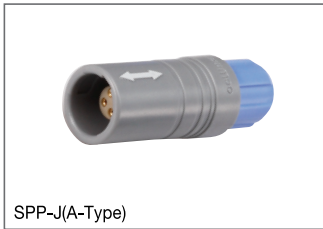
- Straight Plug
- ① Body
 - ② Latch sleeve
 - ③ Male contact
 - ④ Insulator
 - ⑤ Collet
 - ⑥ Screw cap

■ Mini-map



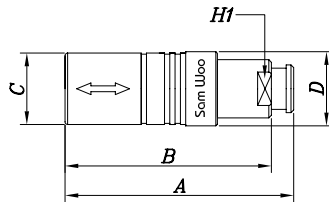
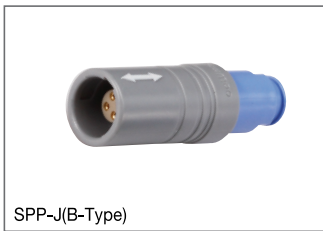
※ SPPC has the same mini-map.

■ SPP Jack



Product Number	A	∅ B	∅ C
SPP- SPPC- T J I S A	40,0	13,5	14,0

Material & Female contact Cut code : Page 72
 Collet Code : Page 72
 Screw Cap Color : Page 72
 Contact Code : Page 71
 Body Color : G(Grey) or K(Black)
 Key angles : Page 68



Product Number	A	B	∅ C	∅ D	H1
SPP- SPPC- T J I S B	43,0	38,7	13,5	14,0	9,0

Material & Female contact Cut code : Page 72
 Collet Code : Page 72
 Screw Cap Color : Page 72
 Contact Code : Page 71
 Body Color : G(Grey) or K(Black)
 Key angles : Page 68

■ Contact Code

Series & Model	Size	Contact Code	Current		Contact ∅	No. of Contacts	Wire Gauge (Maximum)	Contact Arrangement
			SPP	SPPC				
SPP & SPPC	1	302	10A	5A	1,3	2	AWG20	
		304	8A	3A	0,9	4	AWG22	
		305	7A	3A	0,9	5	AWG22	
		306	6A	2A	0,7	6	AWG26	
		307	5A	2A	0,7	7	AWG26	
		308	5A	2A	0,7	8	AWG26	
		310	3A	1A	0,5	10	AWG28	

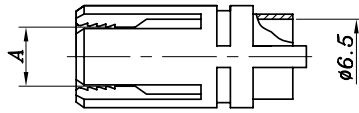
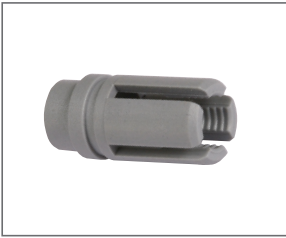
Note : Connector contact arrangement is from solder pot.

SPP Series P Model Contact Code

■ Screw cap color / Nut color

Code	BK	GY	WH	RD	GN	BU	OR	YE	BR
Color	Black	Grey	White	Red	Green	Blue	Orange	Yellow	Brown

■ Collet Code



Series & Model	Size	Collet Code	A	Cable Ø	
				Max	Min
SPP SPPC	1	D39	3,9	3,9	2,7
		D52	5,2	5,2	4
		D65	6,5	6,5	5,3

■ Material Code (For all SP Plastic series)

Contact		Insulator		Female Contact Cut		Latch Sleeve / Receptacle Body	
Code 1	Material	Code 2	Material	Code 3	Material	Code 4	Material
A	Brass	N	PA	H	Half	C	PC
P	Bronze					J	PEI
R	Bronze						

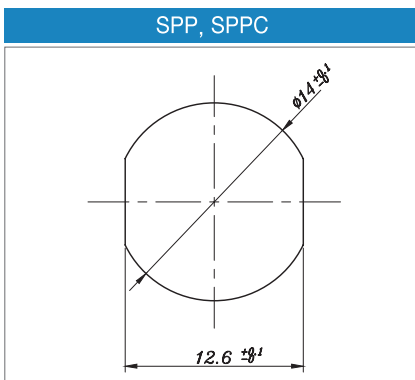
Material Code Instruction

Plug + Male Contact : Code 1, 2, 4

Receptacle + Female Contact : Code 1, 2, 3, 4

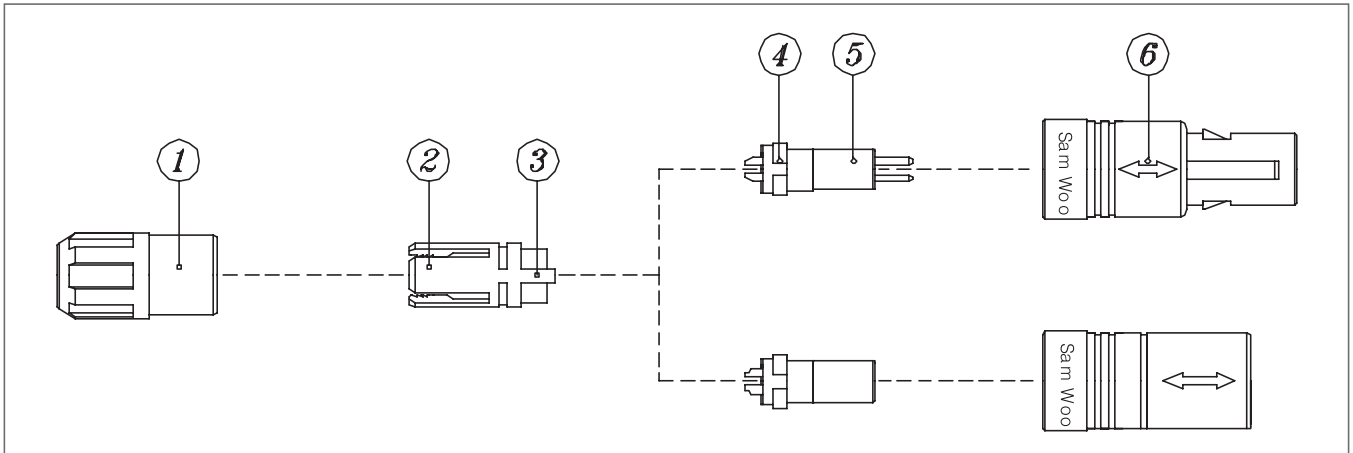
Jack + Female Contact : Code 1, 2, 3, 4

■ SPP, SPPC Series Panel Layout

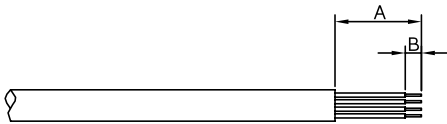


Specifications subject to change without notice. Consult Sam Woo Electronics for the latest specifications.

■ Solder contacts



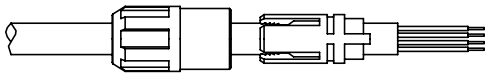
1.



1. Strip the cable according to the lengths given in the table. Tin the conductors.

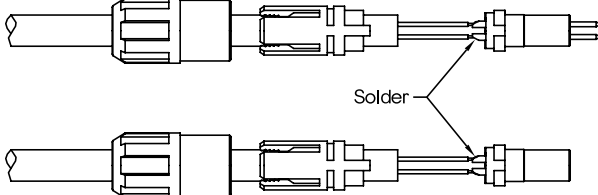
Configuration	Dimensions(mm)	
	A	B
302	14,0	4,0
304, 305	13,0	3,0
306 to 314	12,5	2,5

2.



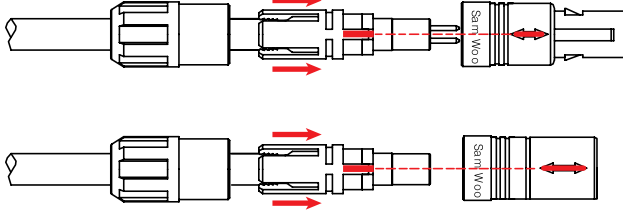
2. Slide the screw cap ① and then the collet ② onto the cable.

3.



3. Solder conductors into contacts, making sure that neither solder nor flux gets onto the insulator or cable insulation.

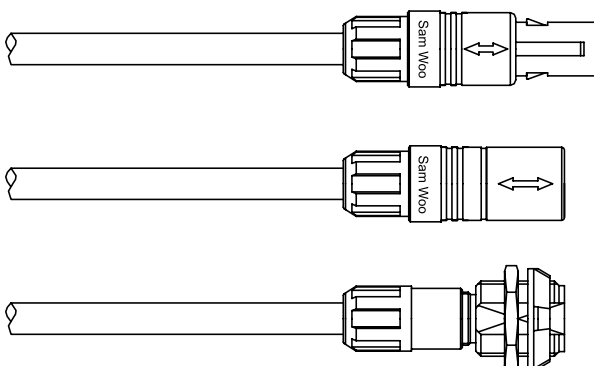
4.



4. Slide the collet ② forward and locate tag ③ in the slot ④ on the insulator ⑤. Slide screw cap ① over collet ② and then push the whole assembly into p)body ⑥ whilst turning it to ensure that the tag ③ locates in the inside slot of the p) body. Tighten the screw cap ① to the maximum torque of 0,25 Nm.

◆ Receptacle mounting nut torque = 1,5 Nm.

5.



5. Completion



Features

- User friendly and robust
- Secure multi-contact push-pull mechanism that allows quick connection and disconnection while providing reliable strain relief
- Overmolded with silicone or urethane,
- Available in cable collet or flexible boot
- Withstands extensive steam or chemical sterilization with rugged PSU or PEI housing materials
- Precise connection with color codes and multiple-key configurations
- Lightweight and durable for more than 1,000 mating cycles
- UL Recognized
- Protection rating of IP 50
- Autoclave(SPP)
- Standard and Custom Design

Applications

- Medical electronics
- Industrial electronics
- Test and measurement
- Automotive

Part Numbering



Drawing Number
Optional Suffix (Omissible)
 1,2,3
 To indicate modification of original
Cable Length : 3 Digits
 Unit Plug : m
 Recep : cm
 Ex) Using 3m Cable for Plug : 003
 Using 30cm Cable for Recep : 030

Plug Cable Assembly



Type	Construction
A	SPP Connector + Cable + Housing
B	SPP Connector + Cable + SPP Connector

※ Design and Customization Service Available

Receptacle Cable Assembly



Type	Construction
A	SPP Connector + wire + open end
B	SPP Connector + wire + Housing
C	SPP Connector + wire + Housing with core

※ Design and Customization Service Available

Specifications subject to change without notice. Consult Sam Woo Electronics for the latest specifications.