



## SMA Features

- 18 GHz MIL-C-39012 SMA specifications
- High quality finish and optimum electrical properties
- Special version offers housing elements made of copper beryllium or stainless steel for higher mechanical strength
- Copper beryllium of the special version is gold plating, while stainless steel connectors are passivated
- SSMA also available.

## SMB Features

- DC to 4GHz MIL-C-39012 SMB specifications
- Snap-on for rapid connection and disconnection

## MCX Features

- Up to 2GHz MIL-C-39012 MCX specifications
- 30% less space than SMB
- Offers equal contact reliability as SMB

## Major Performance

SMA	Impedance	50 $\Omega$		Contact resistance	Center Contacts	3,0m $\Omega$
	Frequency range	Semi-rigid	DC 18GHz		Outer Contacts	2,5m $\Omega$
		Flexible	DC 12,4GHz	Insulation resistance	500M $\Omega$ min	
	Contact current	DC 2,0A max		Insertion loss	0,05 f(GHz)db	
	Working voltage	Semi-rigid	1000V		V,S,W,R	<1,15+0,02f(GHz)
Flexible		750V		RF leakage	-60dB min@2~3GHz	

SMB	Impedance	50 $\Omega$		Insulation resistance	1000M $\Omega$ min	
	Frequency range	DC to 4GHz		Insertion loss	0,6dB max	
	Contact current	DC 1,5A max		V,S,W,R	Straight	1,3+0,04f
	Voltage rating	250V R,M,S			Right-angle	1,4+0,06f
	Contact resistance	Center Contacts	0,3m $\Omega$		RF leakage	-55dBm min, between 2 to 3 GHz
Outer Contacts		0,5m $\Omega$				

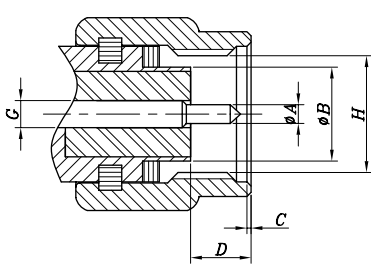
MCX	Impedance	50 $\Omega$		Contact resistance	Center Contacts	5,0m $\Omega$
	Frequency range	up to 2 GHz			Outer Contacts	1,0m $\Omega$
	Contact current	DC 1,5A		Insulation resistance	1000M $\Omega$ min	
	Voltage rating	250V R,M,S		V,S,W,R	Straight	1,3 max
			Right-angle		1,35 max	

## Material Used / Finish

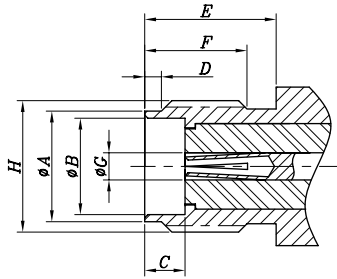
General		Material	Finish
Body		Brass	Gold Plating
Insulator		PTFE	Natural(White)
Contacts	Male	Brass	Gold Plating
	Female	Brass	Gold Plating

Specifications subject to change without notice. Consult Sam Woo Electronics for the latest specifications.

■ SMA Interface Dimensions



Plug



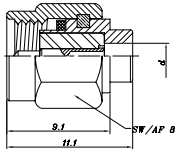
Jack

Interface Dimension

SMA	Plug mm		Jack mm	
	min.	max.	min.	max.
Ø A	0.9	0.94	5.28	5.49
Ø B		4.59	4.59	
C	0.38	1.14	1.88	1.98
D		3.43	0.38	1.14
E			5.54	
F			4.32	
Ø G	1.24	1.29	1.24	1.29
H	1/4-36 UNS-2B		1/4-36 UNS-2A	

■ SMA Plugs

Straight - Semi-rigid Cable - Direct Solder

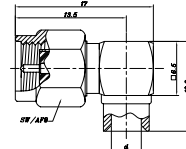


Product Number

SMA-P-402/U

SMA-P-405/U

Right-angle - Semi-rigid Cable - Direct Solder

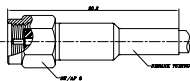


Product Number

SMA-LP-402/U

SMA-LP-405/U

Flexible Cable - Crimp



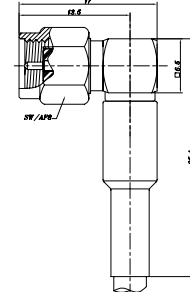
Product Number

SMA-PC-58/U

SMA-PC-178/U

SMA-PC-316/U

Right-angle - Semi-rigid Cable - Crimp



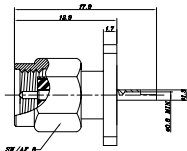
Product Number

SMA-LP-58/U

SMA-LP-178/U

SMA-LP-316/U

Fixed Plug - Flange - Solder Pot Terminated

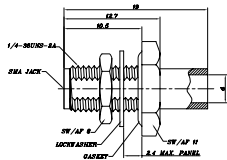


Product Number

SMA-PR

■ SMA Jacks

Bulkhead - Semi-rigid Cable - Direct Solder

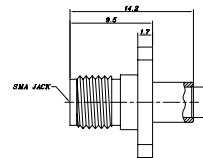


Product Number

SMA-BJR-402/U

SMA-BJR-405/U

Fixed Jack - Flange - Semi-rigid Cable - Direct Solder

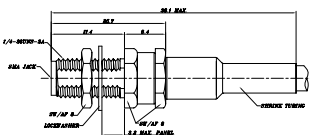


Product Number

SMA-JR-402/U

SMA-JR-405/U

Bulkhead - Flexible Cable - Crimp



Product Number

SMA-BJC-58/U

SMA-BJC-178/U

SMA-BJC-316/U

Specifications subject to change without notice. Consult Sam Woo Electronics for the latest specifications.

