

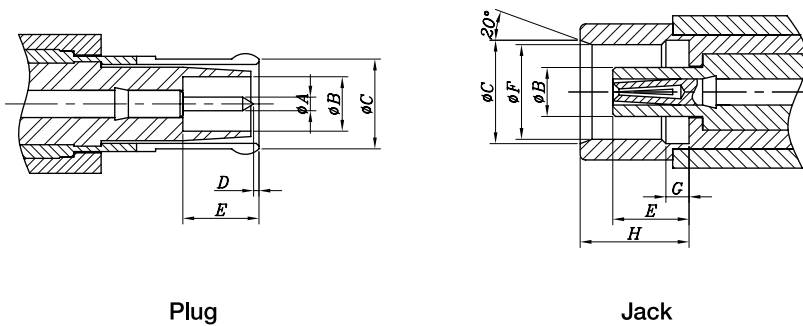
MMCX Series Sub Miniature



MMCX Features

- Up to 2GHz MIL-C-39012 MMCX specifications
- 50% less space than MCX
- Snap-on for rapid connection and disconnection

MMCX Interface Dimensions



Interface Dimension

MMCX	Plug		Jack	
	Min.	Max.	Min.	Max.
∅ A	0,38	0,42		
∅ B			0,7	
∅ C	1,58	1,62	3	3,04
∅ D		2,4	2,41	
E	1,45		2,88	2,9
F			0,9	1,2
G	2,8		2,6	

MMCX Major Performance

MMCX	Impedance	50 Ω	Contact resistance	Center contacts	5m Ω
	Frequency range	up to 2GHz		Outer contacts	2,5m Ω
	Contact current	DC 1A max.	Insulation resistance	1000M Ω	
	Working voltage	170V, 50Hz	V.S.W.R	Straight	1,2Max
		Right-angle		1,3max	

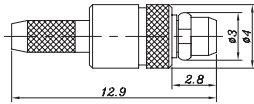
Material Used / Finish

General		Material	Finish
Body		BRASS	Gold Plating
Insulator		TEFLON	white
Contacts	Male	BRASS	Gold Plating
	Female	BRASS	Gold Plating

Specifications subject to change without notice. Consult Sam Woo Electronics for the latest specifications.

■ **MMCX Plugs**

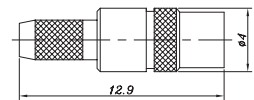
Flexible Cable - Crimp



Product Number

MMCX-PC-178/U

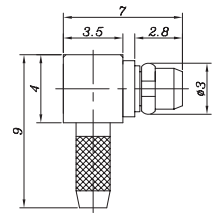
MMCX-PC-316/U



Product Number

MMCX-JC-316/U

Right - angle - Flexible Cable - Crimp



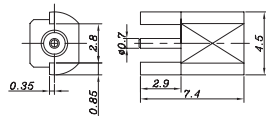
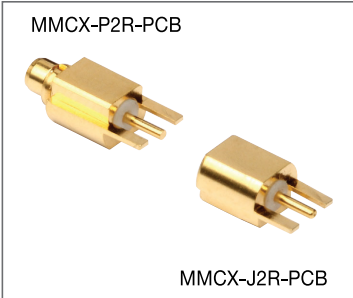
Product Number

MMCX-LPC-178/U

MMCX-LPC-316/U

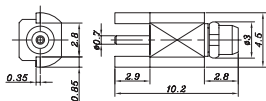
■ **MMCX Terminator**

PCB Receptacle - 2leg - Stub Terminated



Product Number

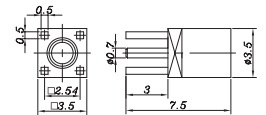
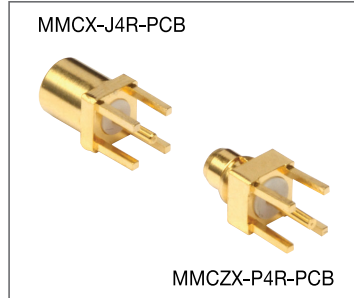
MMCX-J2R-PCB



Product Number

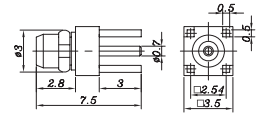
MMCX-P2R-PCB

PCB Receptacle - 4leg - Stub Terminated



Product Number

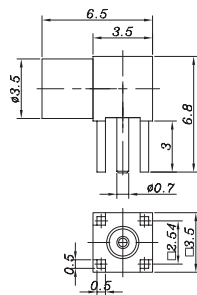
MMCX-J4R-PCB



Product Number

MMCX-P4R-PCB

Right - angle - PCB Receptacle - 4 leg - Stub Terminated



Product Number

MMCX-LJ4R-PCB

Specifications subject to change without notice. Consult Sam Woo Electronics for the latest specifications.